



Top Rated Service 2025

verified by Trustindex

# FINANCIAL MODELING

AI INTEGRATED TOOLS

#Top skill for core for Investment Banking Placements

### DCF MODEL

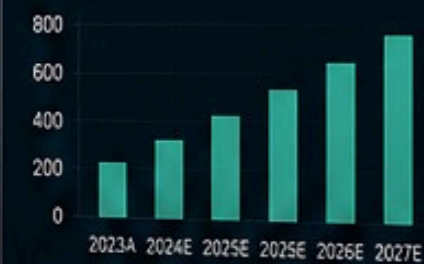
Income Statement (USD in millions)

	2023A	2024E	2025E	2027E
Revenue	1,255.8	1,386.0	1,587.2	2,068.0
Growth (%)	10.3%	10.3%	14.0%	14.4%
COGS	(682.1)	(741.3)	(844.6)	(1,101.0)
Gross Profit	573.7	644.7	736.1	967.0
Operating Expenses	(273.4)	(308.2)	(344.1)	(425.7)
EBITDA	301.3	336.5	392.0	541.3
Depreciation	(42.1)	(45.8)	(50.1)	(59.6)
EBIT	259.2	290.7	341.9	481.7
Net Income	176.6	200.4	237.4	344.6
Net Margin (%)	14.1%	14.5%	15.0%	16.7%

### REVENUE BREAKDOWN FY2024E



### CASH FLOW (OPERATING)



### VALUATION SUMMARY

Enterprise Value (USD)

\$2,842M

Implied Equity Value / Share

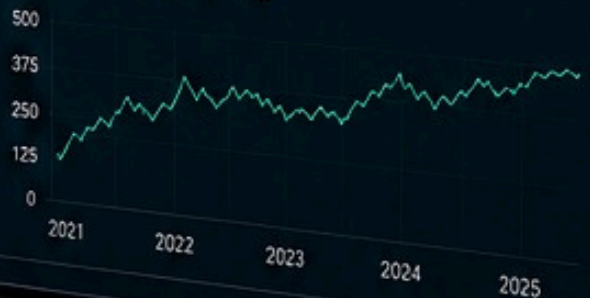
\$78.42

### SENSITIVITY ANALYSIS

EV / EBITDA Multiple



### HISTORICAL PERFORMANCE



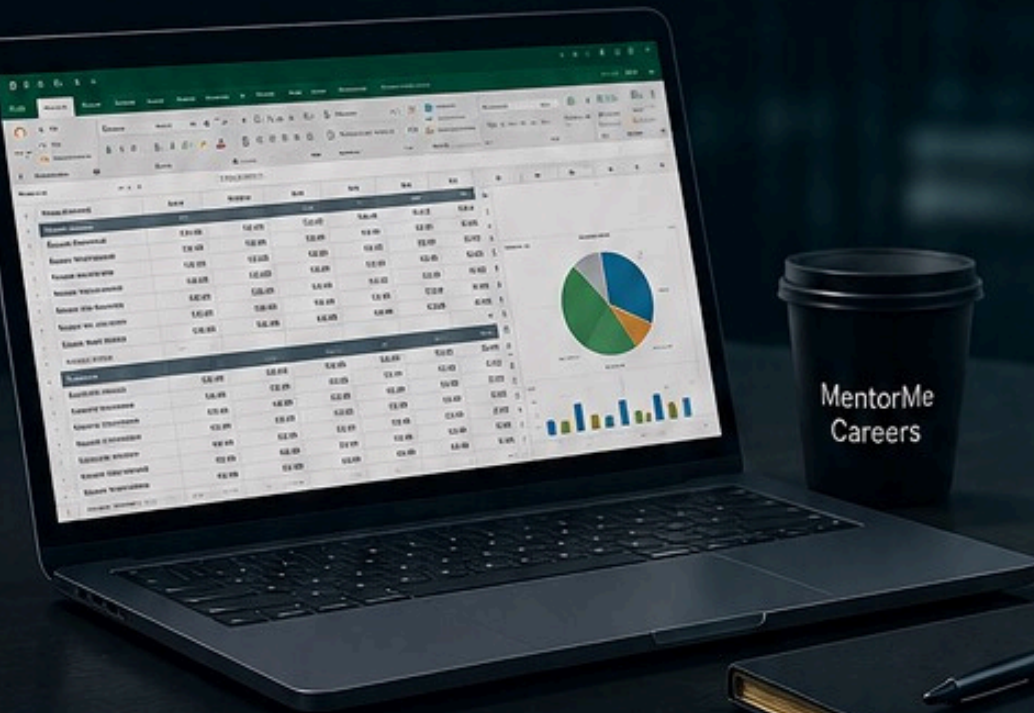
### AI FINANCE ASSISTANT



How can I help you today?

- > Analyze Annual Reports
- > Build Financial Models
- > Create Pitch Decks
- > Generate Dashboards

Ask anything about finance...



India's Most Comprehensive Financial Modeling Course



200 Hrs Program + 12 Specialisation



Industry Specific Prep



Guaranteed Interviews



Average Freshers Salary 6-7 LPA



Industry Recognised Certification

# About Us

**65 K+**

Careers  
Transformed

**#1 in**

Placement  
Programs

**2000+**

Hiring Partners

**3X**

Salary Growth

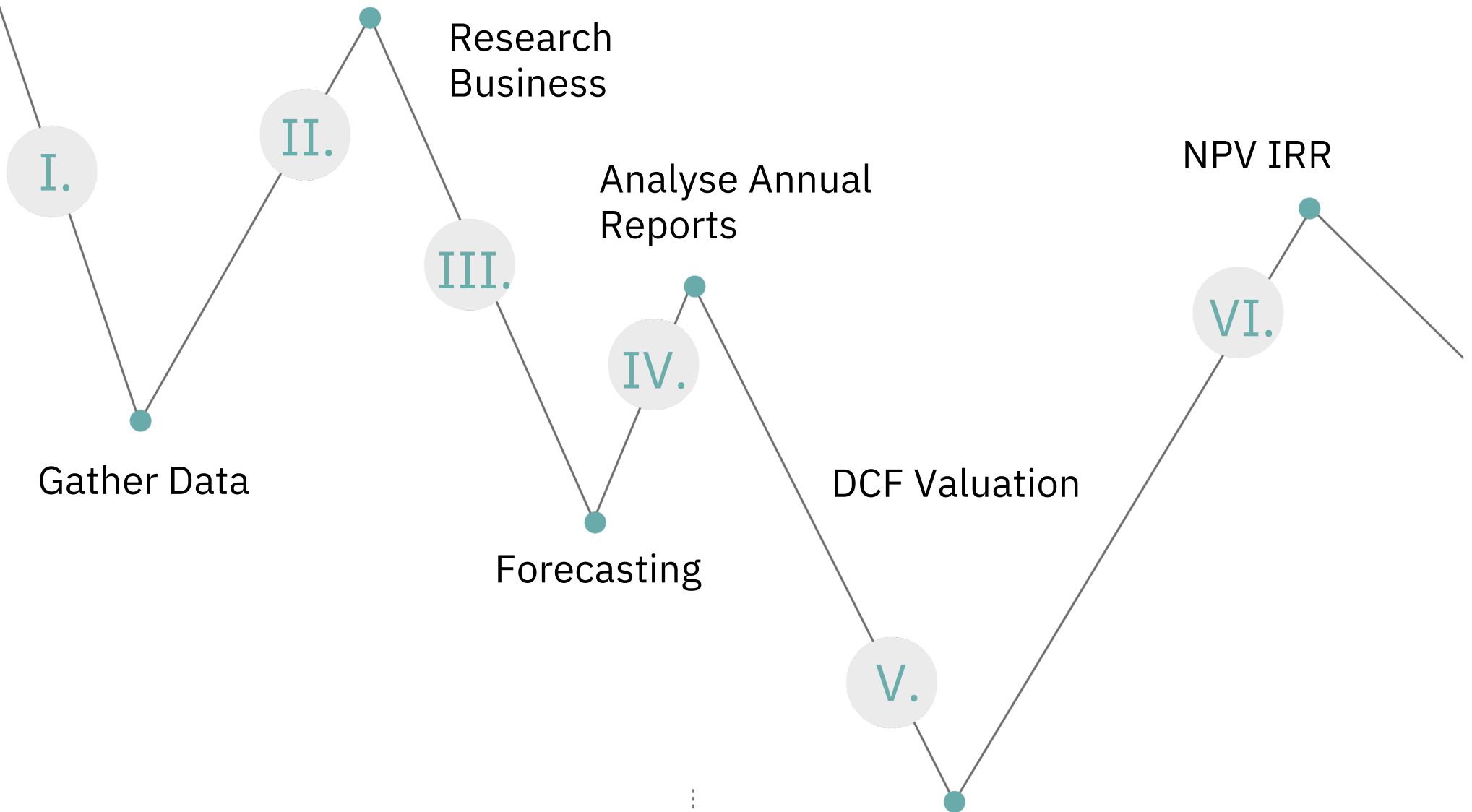


Modern Education Society's  
**Neville Wadia Institute of  
Management Studies & Research, Pune**

# Skill Partner To B-Schools

# WHAT IS FINANCIAL MODELING?

The Minimum Essential Skill For Core Finance Jobs



Portfolio Management



Investment Banking Research



Credit Rating



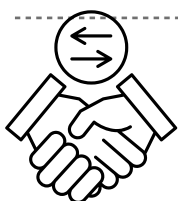
Algo Trading



Project Finance



Equity Research



Mergers and Acquisitions

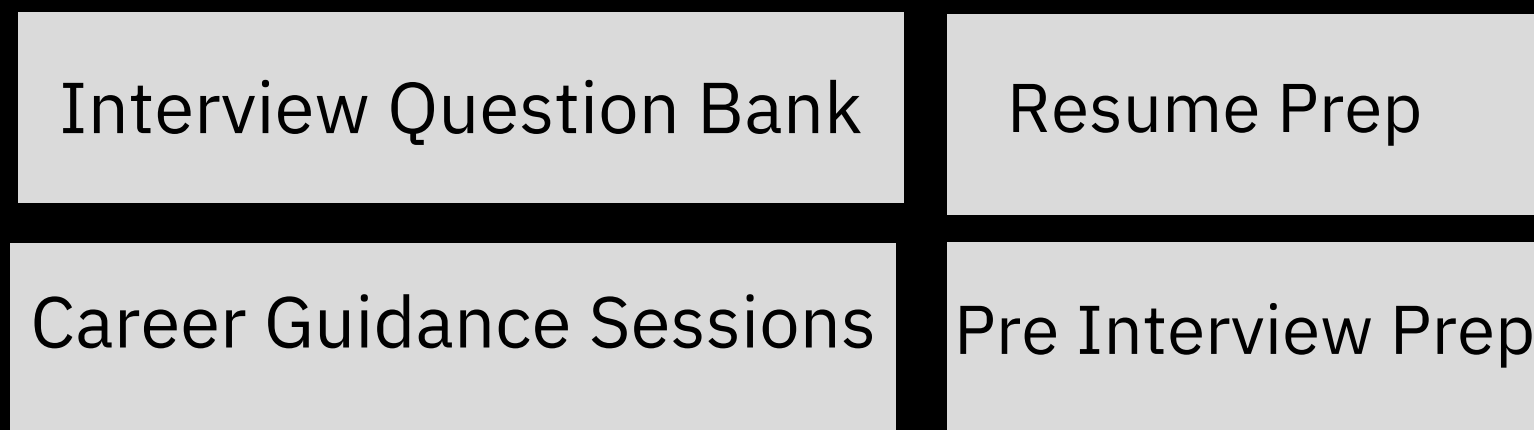


Corporate Banking

# How Placement Works



# Placement Resources



# Curriculum

Broader Topics	Difficulty	Certification
Part 1 – Excel & Fin Maths	Beginner	Y
Part 2 – Finance Fundamentals	Beginner	Y
Part 3 – Project Finance	Intermed	Y
Part 4 – Equity Valuation	Advance	Y
Part 5: Interview Prep, Mocks	Advance	Y
Part 6:AI For Finance	Advance	Y

## Specialisations In 12 Sectors



# PLACEMENTS

Industry placements across FP&A, Analytics & Finance Roles

**NAVJOT JOSHI**  
EDUCATION: MBA  
Financial Analyst



**Nirvana Capital**

Placed

**SANGHARSH BANKAR**  
EDUCATION: MBA FINANCE  
Financial Analyst



**Posh & Metals**

Placed

**OMKAR KAMDAM**  
EDUCATION: BCS



**Gallagher & Mohan**

Placed

**DITHINDAS DEVADASAN**  
EDUCATION: ENGINEER  
Research Analyst



**REHAN SHAHID**  
EDUCATION: B.COM  
Research Analyst



**Visible Alpha**

Placed

**SARTHAK SABHARVAL**  
EDUCATION: B.COM  
Research Analyst



**D.E Shaw**

Placed

**ASHVINI SHRIRAME**  
EDUCATION: MBA  
Consulting



**Crisil**

Placed

**RAJENDRAN V**  
EDUCATION: ENGG  
EQUITY RESEARCH



**Daloopa**

**Placed**

**VIVEK RAWAT**  
EDUCATION: B.COM



**XL Dynamics**

**Placed**

**GOURAV SHAW**  
EDUCATION: PGDM  
Financial Analyst



**Nirvana  
Capital  
Delhi**

**Placed**

**PRITISH VERMA**  
EDUCATION: MBA  
Financial Analyst



**Insync  
Analytics**

**Placed**

**PARASH MASHRU**  
EDUCATION: CFA LEVEL 2



**CSC Global**

**VIMAL SANDILYA**  
EDUCATION: B.COM  
Financial Analyst



**Goldman Sachs**

**KALYAN KUMAR**  
EDUCATION: B.COM  
Financial Analyst



**SG Analytics**

**VISHAKHA BAKSHE**  
EDUCATION: MBA (Finance)  
Financial Analyst



**SG Analytics**

**RAGHAV JOSHI**  
EDUCATION: MBA  
Analyst



**Daloopa**

**Placed**

KANIKJOT SINGH  
EDUCATION: B.COM



**Deutsche**

**Placed**

PRAJWAL BHAGHELE  
EDUCATION: BBA  
Trade Analyst



**Genpact**

**Placed**

VEERESH SHETTY  
EDUCATION: CFA Level 1  
Financial Analyst



**Broadridge**

**Placed**

NAVEENA BIRDAR  
EDUCATION: CFA Level 1  
Finance Associate



**Iresearch**

**Placed**

DAKSH RAJ  
EDUCATION: MAC FINANCE  
Equity Analyst



**Yog  
Infra**

**Placed**

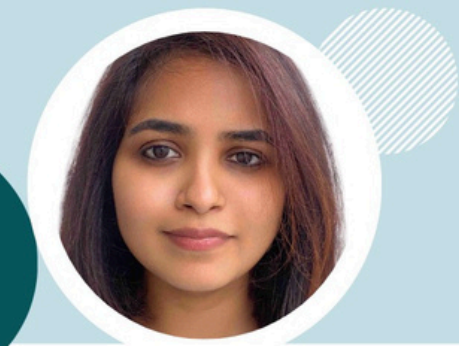
MUSKAN GOEL  
EDUCATION: MS IN COMERCE  
Project Finance Associate



**GALLAGHAR &  
Mohan  
Mumbai**

**Placed**

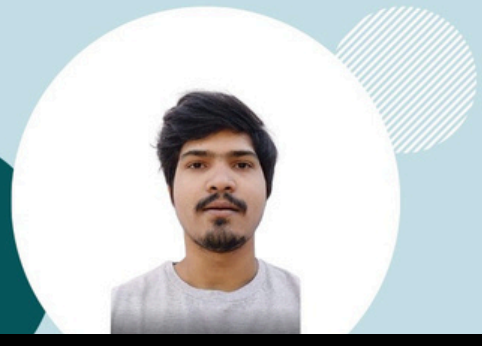
BABITA DAS  
EDUCATION: M.com  
Financial Analyst



**SB  
Consulting**

**Placed**

MD.ALEEM  
EDUCATION: B.com  
Credit Analyst



**WNS**

**Placed**

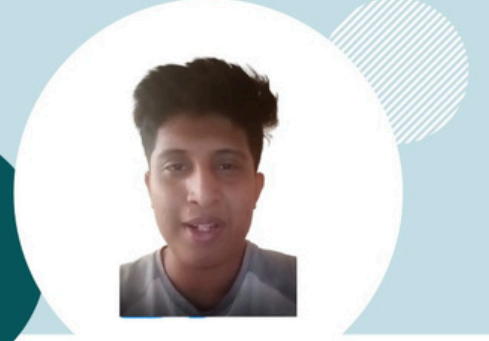
CHETAN NANDURKAR  
EDUCATION: MBA  
Finance Associate



**Morning Star**

**Placed**

SHASHANK MAHALLE  
EDUCATION: M.COM  
Financial Analyst



**ADP**

**Placed**

ROHAN RAO  
EDUCATION: CFA Level 1



**Terkar Capital**

**Placed**

DIKSHA CHIWANDE  
EDUCATION: MBA  
Equity Analyst



**Insync Analytics**

**Placed**

ROHIT JAIN  
EDUCATION: M.COM



**Atos Syntel**

**Placed**

KIRAN GOSAVI  
EDUCATION: BMS  
Financial Analyst



**GAA Advisory**

**Placed**

HIMANSHU CHABRA  
EDUCATION: CFA Level 1  
Financial Analyst



**Analytical Investments**

**Placed**

GIRISH GOTAKINDI  
EDUCATION: PGM FINANCE  
Financial Analyst



**CDSL**

**Placed**

SHRAVIL SHARMA  
EDUCATION:MS FINICIAL  
Risk Mangement



**ADP**

**Placed**

NIDISHA RAI  
EDUCATION:B.COM  
FP&A



**Deloitte**

**Placed**

VIVEK KUMAR  
EDUCATION:MBA  
Financial Risk Advisor



**Alpha Valley**

**Placed**

FENIL SHAH  
EDUCATION:B.E  
Investment Banking Intern



**NMS CONSULTING**

**Placed**

PRANEETA JAIN  
EDUCATION:MBA



**GAA Advisory**

**Placed**

MAYANAK JAIN  
EDUCATION:M.COM  
Sr.Financial Analyst



**MITCON**

**Placed**

EVA SATRAKAR  
EDUCATION:B.COM  
Project Finance Analyst



**Arthayan**

**Placed**

OMKAR PARLILKAR  
EDUCATION:BBA  
Investment Banking Associate



# Mumbai

Office No 308, Ellora Fiesta, 8, Gaondevi Marg, Sector 11, Sanpada, Navi Mumbai, Maharashtra 400706

# Pune

207, Marisoft 1, Marigold Premises, Kalyani Nagar, Pune 411014

**Core** Skills  
**For**  
**Finance**



**Top Rated  
Service 2025**

verified by Trustindex ⓘ



**+91 7021450511**



**[www.mentormecareers.com](http://www.mentormecareers.com)**